



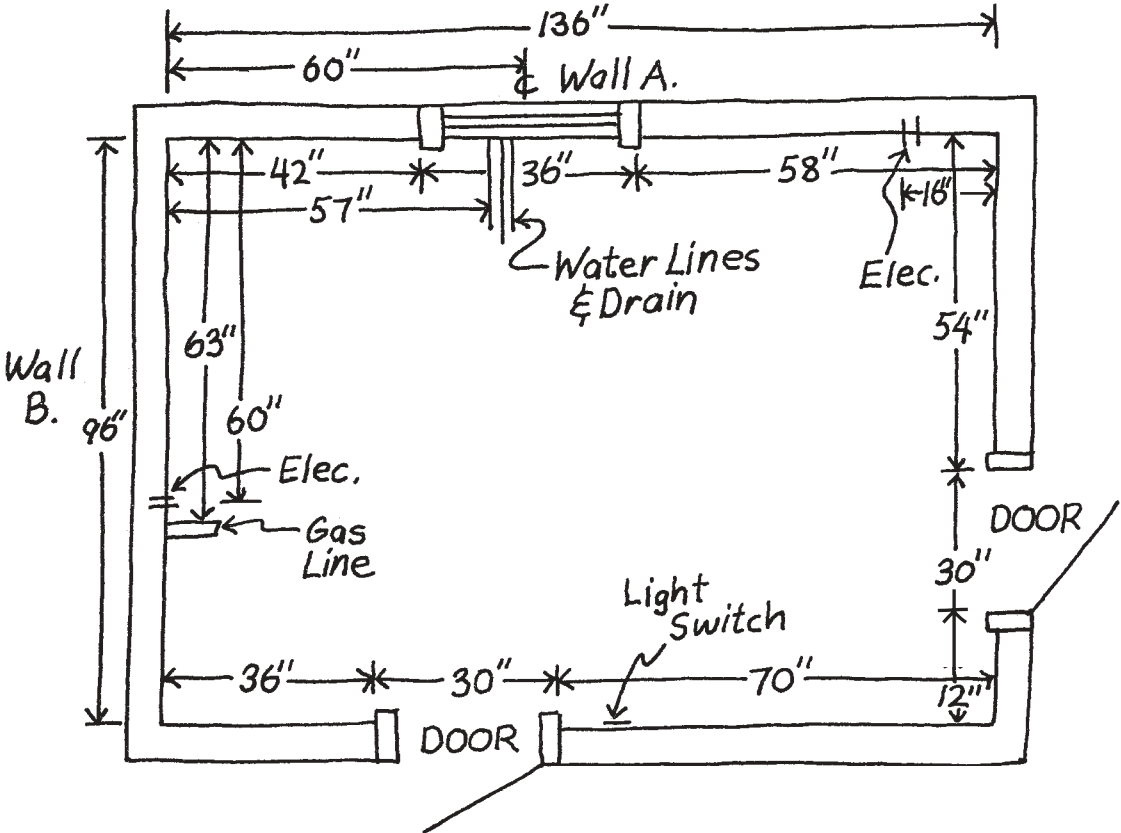
Measure Your Space

Accurate measurements as indicated in the measuring procedure are the key elements we will need to plan your new kitchen. With this information, our kitchen specialists will be able to help design the kitchen of your dreams!

FLOOR PLAN

Before any planning can start we must know the exact dimensions available to work with. Using the measuring procedure illustrated, carefully prepare a simple floor plan of your existing kitchen.

Your completed floor plan should resemble the diagram shown below. Make sure you show exact locations of doors, windows, hood vents, exhaust, gas line, water line, drains, switches, outlets, light fixtures, and heat vents. Double check all measurements.



EXAMPLE FLOOR PLAN

MEASURING PROCEDURE

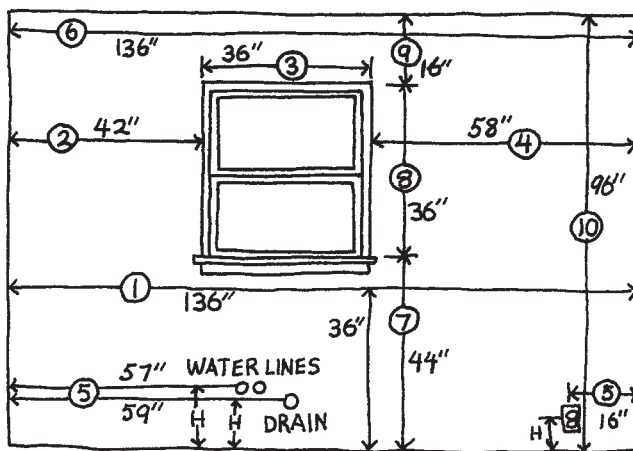
Using a tape measure and graph paper, measure as outlined below.

Horizontal Measurement

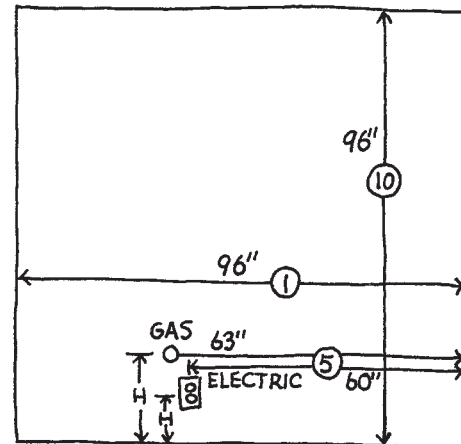
1. Measure from wall to wall at 36" height.
2. Measure from corner to window or door opening.
3. Measure across opening from trim edge to trim edge.
4. Measure from edge of trim to far wall. Compare sum of #2, #3 and #4 measurements to step #1.
5. Mark exact location of water, drain, gas lines and electrical outlets and switches on drawing.
6. Measure from wall to wall above window and compare to #1.

Vertical Measurement

7. Measure from floor to window sill.
8. Measure from window sill to top of window.
9. Measure from top of window to ceiling.
10. Measure from floor to ceiling – Compare to sum of #7, #8 and #9.



WALL A.



WALL B.

2.

Appliance/Fixture Information

Show desired locations of appliances on drawing. It is very important to indicate natural gas locations, 220 volt outlets, any wall mounted telephone locations (T) and cable TV locations (CTV).

| | Type | Size W x D x H | Hinge Position L/R (Facing Appliance) |
|--|--------------|----------------|--|
| | Refrigerator | | |
| | Range | | |
| | Cooktop | | |
| | Exhaust Hood | | |
| | Wall Oven | | |
| | Microwave | | |
| | Dishwasher | | |
| | Sink | | |
| | Disposal | | |
| | Compactor | | |
| | Freezer | | |
| | Other | | |

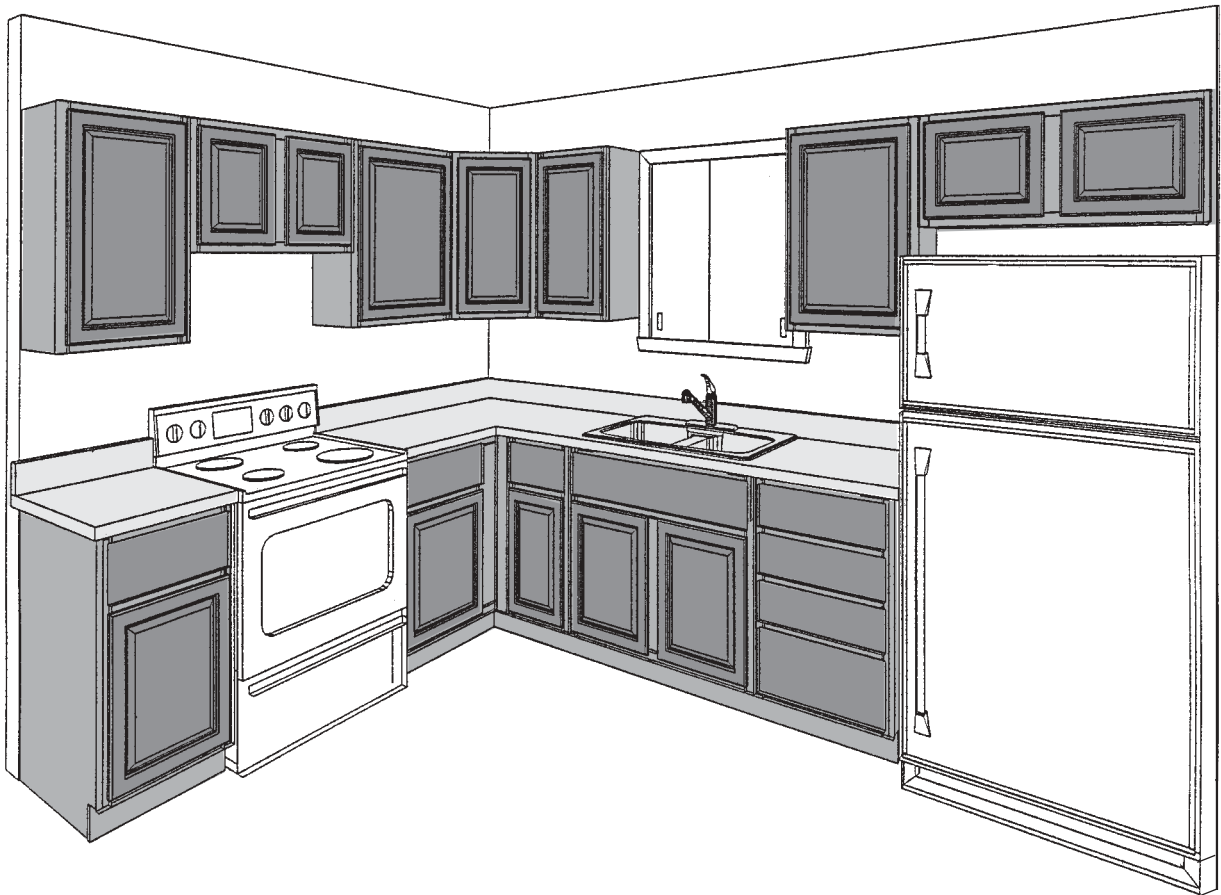
AVAILABLE ACCESSORIES

Customize your kitchen with these cabinet accessories and options.

- Mullion Doors
- Wall Cabinet Decorative Ends
- Wine Rack
- Knick Knack Wall Shelf
- Under Cabinet Organizer
- Stem Glass Holder
- Corner Appliance Garage
- Straight Appliance Garage
- Wood Hoods
- Microwave Wall Cabinet
- Straight Valance
- Curved Valance
- Country Valance
- Base Knick Knack Shelf
- Peninsula Base Knick Knack Shelf
- Base Cabinet Decorative Ends
- Pull Out Pantry Cabinet
- Fluted Fillers
- Open Shelved Bookcases
- File Drawer Base Cabinet for Desk
- Knee Drawer Cabinet for Desk
- Cutting Board
- Tray Divider
- Rolling Tray System
- Utility Trays
- Cutlery Trays
- Spice Trays
- Cosmetic Tray
- Lazy Susan in Wall Corner Cabinet
- Lazy Susan in Base Corner Cabinet
- Sink Front Tilt-Out Trays
- Behind Door Storage Trays
- Waste Baskets
- Door Mounted Spice Racks
- Pull Out Wire Pantry Kit
- 3 Shelf Pull Out Baskets
- Single Shelf Pull Out Basket
- Pull Out Towel Bar
- Under Sink Baskets
- Cabinet Security Locks

3. Design By Computer

After you have completed your kitchen layout drawing, bring it to our showroom. Here the drawing will be discussed and any possible changes can be made. A computerized 3-dimensional layout will be presented. This will give you a realistic rendering of your dream kitchen!



4. Helpful Hints

- ✓ Be sure there is adequate access to remodeling areas.
- ✓ Reduce the spread of dust and dirt by covering all work area openings.
- ✓ Allow plenty of time for product delivery.
- ✓ Check all new cabinetry first before tear down begins.
- ✓ Have plenty of room for opening uncartoned products.
- ✓ Plan for removing additional trash and debris.
- ✓ Make provisions for food preparation, utensils, and clean-up while your kitchen is being remodeled.



Your ideas become reality™

www.armstrong.com